

APPLICATIONS

Defect Detection: UV light is used in fluorescent dye penetrant inspection to detect cracks and defects in electronic components and assemblies. This non-destructive testing method ensures high-quality standards.

Cleanliness Verification: UV light helps verify the cleanliness of components and PCBs by revealing contamination invisible to the naked eye.

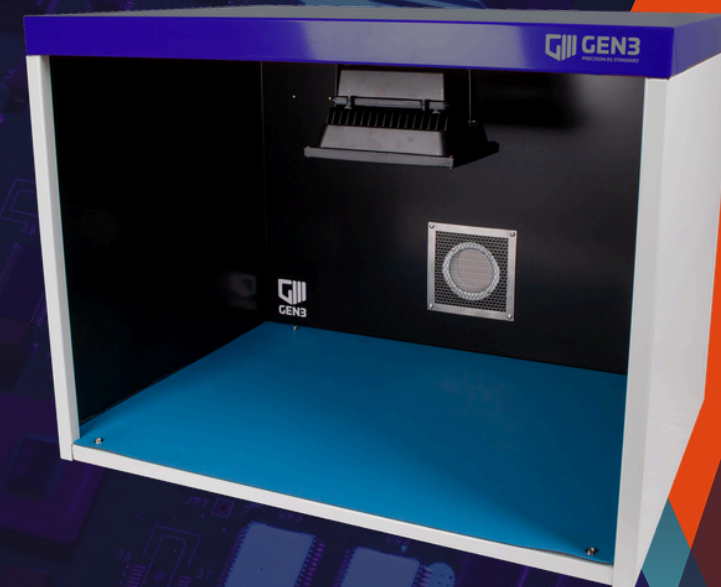
Fluorescent Penetrant Inspection (FPI): UV light is used to detect surface and sub-surface defects in materials. Fluorescent dyes are applied to the material, and UV light reveals cracks and faults.

Counterfeit Detection: UV light helps in identifying counterfeit products and ensuring the authenticity of materials and components.



UV BOOTH

UV Inspection &
Rework Booth



CONTACT US:



+44 1252 521 500



www.gen3systems.com



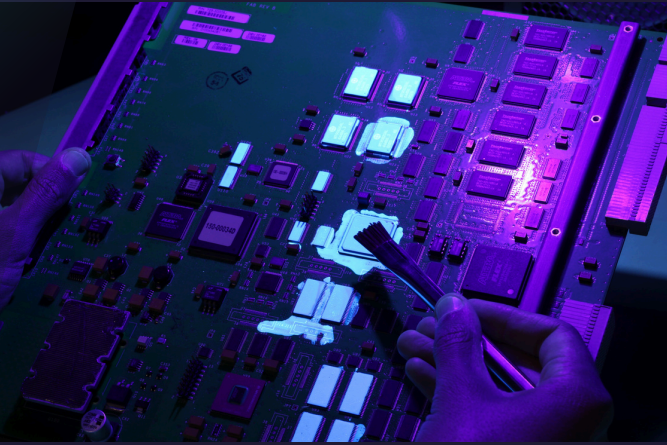
GEN3



B2, Armstrong Mall, Southwood Business Park,
Farnborough, Hampshire GU14 0NR, UK



UV BOOTH



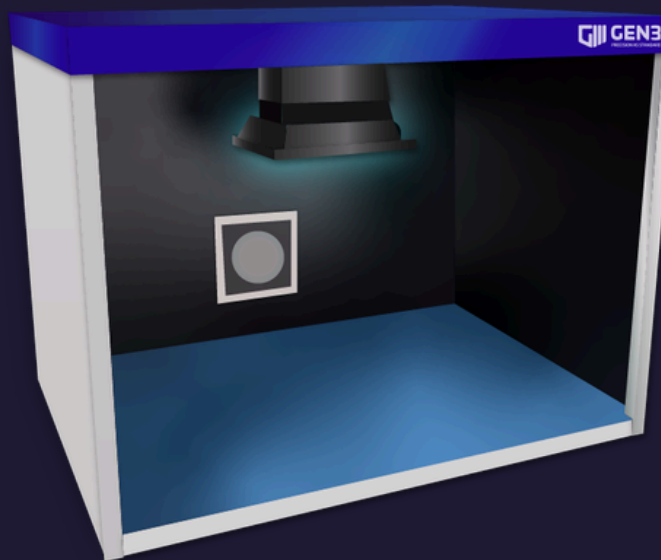
The UV Light Booth is a powerful inspection tool designed to reveal discrepancies, contamination, and process issues with precision using UV light.

Engineered for high-performance inspection, this advanced booth delivers quick, clear, and reliable visual assessments, making it an essential asset across industries such as electronics and medical manufacturing. With superior build quality and intuitive operation, it ensures fast, accurate results for critical quality control processes.

Built for durability and performance, this premium UV Light Booth features a robust aluminum chassis coated with solvent-resistant paint for long-lasting protection.

Designed for precision and safety, the anti-static work base comes fitted with an anti-static mat and dedicated earthing points, ensuring optimal handling of sensitive materials.

For added efficiency, a centrally positioned exhaust spigot (25 x 80 mm) allows seamless integration with external exhaust systems, maintaining a clean and controlled inspection environment.



Features

- Aluminium chassis
- Dimensions 820L x 600w x 620h (mm)
- Designed for bench top applications
- Anti Static work mat fitted
- Solvent resistant protective paint
- On/Off switch with IEC connector & 2M power cord

Power Specifications

- Power consumption - 48W
- Protection grade - IP65
- LED type - 48W
- LED beam angle - 120°
- UV wavelength - 390nm peak

Full specification can be found on our website.

